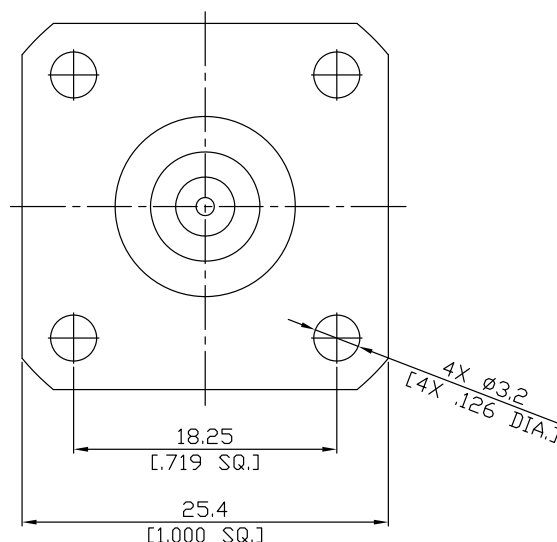
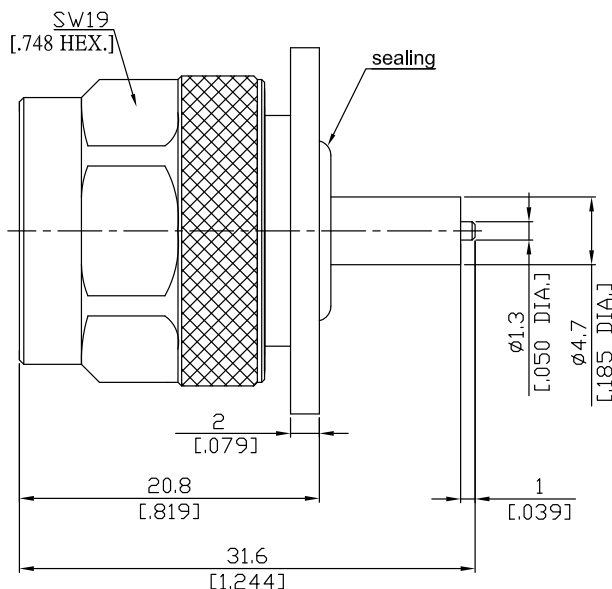


N Plug (male) Connector Solder Attachment 4 Hole Flange Mount
Stub Terminal, 18.25mm (.719 inch) Hole Spacing DC-6GHz VSWR1.22

N1GFA50-3160A / 144



All dimensions are in mm [inch]

Tolerances according to DIN ISO 2768-mH

Interface

According to

IEC 61169-16; MIL-STD-348B/304

Electrical Data

Impedance

50 Ω

Frequency

DC to 11 GHz

VSWR (Return Loss)

≤ 1.20 (≥ 20.83 dB)

Insertion Loss

≤ 0.1 × √F (GHz) dB

Insulation Resistance

≥ 5 GΩ

Center Contact Resistance

≤ 1 mΩ

Outer Contact Resistance

≤ 0.25 mΩ

Working Voltage (at sea level)

500 V rms

Power handling

1 GHz: 1000 W

2 GHz: 700 W

Material And Plating

| Piece Parts | Material | Plating |
|----------------|-----------------|--|
| Centre contact | Brass | Gold plating, 3 μinch (Non-magnetic nickel-phosphorus underplating, 80 μinch) |
| Body | Brass | Copper-Tin-Zinc Alloy |
| Insulator | PTFE | |
| Gasket | Silicone Rubber | |
| Coupling nut | Brass | Copper-Tin-Zinc Alloy |

N Plug (male) Connector Solder Attachment 4 Hole Flange Mount
Stub Terminal, 18.25mm (.719 inch) Hole Spacing DC-6GHz VSWR1.22

N1GFA50-3160A / 144

Mechanical Data

| | |
|----------------------|------------------|
| Coupling mechanisms | Screw-lock |
| Mating Cycles | ≥ 500 |
| Centre Contact | Soldered |
| Terminal Type | Sube |
| Captivated Type | Mechanical |
| Coupling Test Torque | 1.7 Nm max. |
| Recommended Torque | 0.7 Nm to 1.1 Nm |

Environmental Data

| | |
|---------------------|---------------------------------|
| Temperature Range | -55°C to +155°C |
| Thermal shock | MIL-STD-202, Meth. 107, Cond. B |
| Corrosion | MIL-STD-202, Meth. 101, Cond. B |
| Vibration | MIL-STD-202, Meth. 204, Cond.D |
| Shock | MIL-STD-202, Meth. 213, Cond. I |
| Moisture Resistance | MIL-STD-202, Meth. 106 |
| RoHS | compliant |

Packing

Single or 100